

Wellschlauchhalter

RoHS

Material:
Polyamid 6, nach UL94: V2

Temperaturbereich:
-40°C bis 120°C
kurzzeitig: 150°C

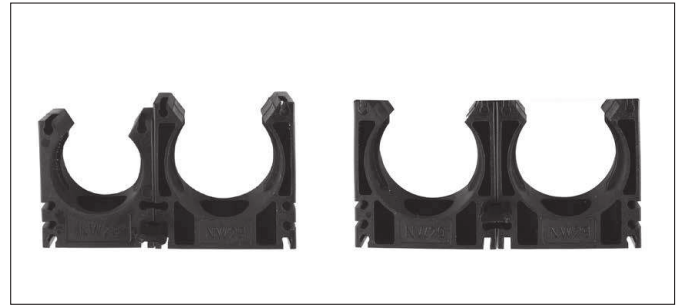
Farbe(n)/Ausführungen:

- Schwarz
- Grau

Eigenschaften:

- anreihbar
- stapelbar
- für schnelle, einfache, sichere Montage

Corrugated Tube Holder



- Rippenfixierung zur Zugentlastung
- Wellschlauch im Halter um die eigene Achse drehbar
- halogenfrei

Anwendungsbereiche:

- Maschinen- und Apparatebau
- Roboterbau
- Kraftfahrzeugbau
- Bahntechnik

Material:
Polyamide 6, V2 accord. to UL94

Temperature range:
-40°C to 120°C
short-term: 150°C

Colour(s)/Designs:

- Black
- Grey

Characteristics:

- for series mounting
- stackable

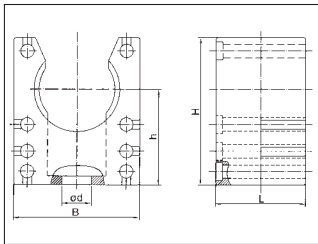
- for quick, easy and safe mounting
- rib fixation as traction relief
- corrugated tube is twistable around its own axis
- free of halogen

Applications:

- mechanical engineering and facility constructions
- robot engineering
- automotive industry
- railway engineering

Wellschlauchhalter ohne Deckel / Corrugated Tube Holder no cap

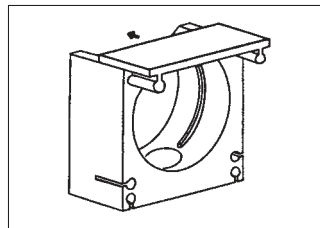
für NW	B mm	H mm	h mm	L mm	d mm	Art.-Nr. schwarz	Art.-Nr. grau	VE Stck.
for NW	B mm	H mm	h mm	L mm	d mm	Art. no. black	Art. no. grey	PU pcs.
7,5	20,0	18,0	12,0	20,0	4,2	8221050	8221150	100
10	20,0	23,0	15,5	20,0	5,5	8221051	8221151	100
12+13	22,0	26,0	17,1	20,0	5,5	8221052	8221152	50
14+16	28,0	33,0	21,1	20,0	6,5	8221053	8221153	50
17	28,0	33,0	21,4	20,0	6,5	8221054	8221154	50
22	35,0	40,0	24,8	20,0	6,5	8221049	-	50
23	35,0	40,0	24,8	20,0	6,5	8221055	8221155	50
29	43,0	45,0	26,8	20,0	6,5	8221056	8221156	30
37	54,0	53,0	30,8	20,0	6,5	8221057	8221157	20
50	68,0	66,0	37,8	20,0	6,5	8221058	8221158	20



Deckel für Wellschlauchhalter



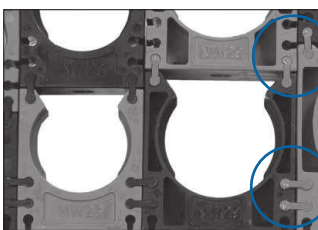
Cap for Corrugated Tube Holder



für NW	Art.-Nr. schwarz	Art.-Nr. grau	VE Stck.
for NW	Art. no. black	Art. no. grey	PU pcs.
7,5+10	8221250	8221350	100
12+13	8221251	8221351	50
14+16+17	8221252	8221352	50
22+23	8221253	8221353	50
29	8221254	8221354	30
37	8221255	8221355	20
50	8221256	8221356	20

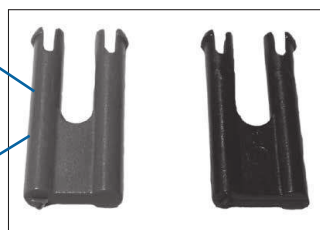
Verbindungssteg für Wellschlauchhalter

Zum Aneinanderreihen oder Stapeln mehrerer Wellschlauchhalter



Connecting Piece for Corrugated Tube Holder

To line or staple corrugated tube holders



für NW	Art.-Nr. schwarz	Art.-Nr. grau	VE Stck.
for NW	Art. no. black	Art. no. grey	PU pcs.
7,5 - 50	8221400	8221401	100