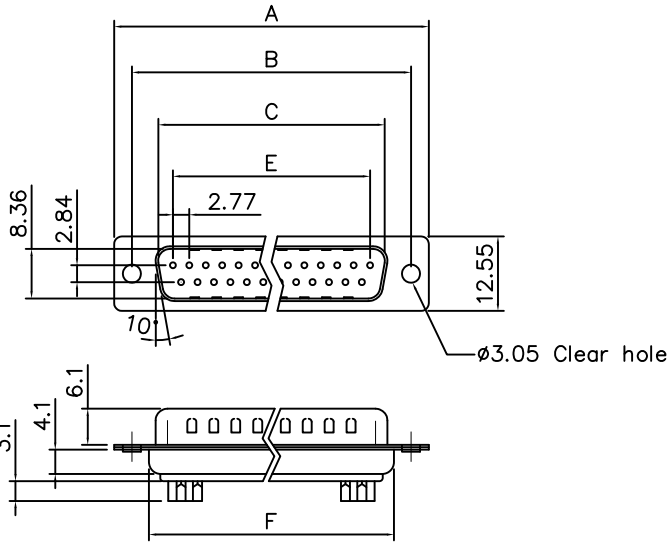


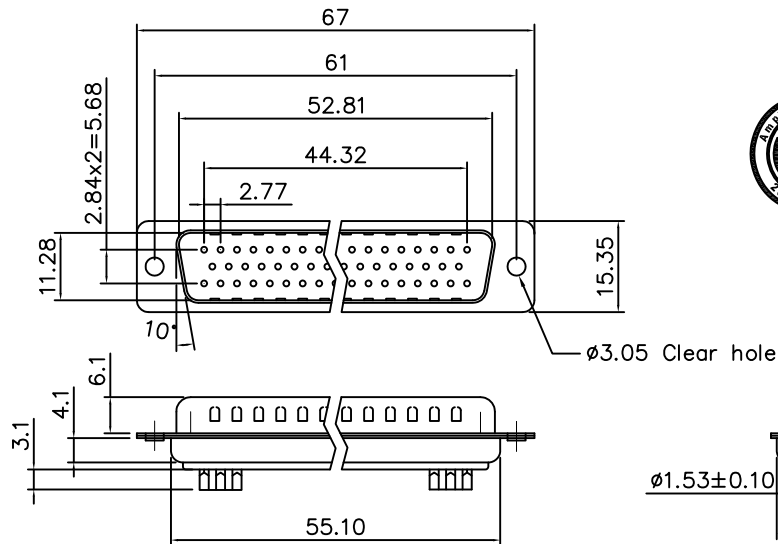
This document is the property of Amphenol Corporation and is delivered on the express condition that it is not to be disclosed, reproduced or used, in whole or in part, for manufacture or sale by anyone other than Amphenol Corporation without its prior consent, & that no right is granted to disclose or to use any information in this document.

Customer Drawing



Dimensions

Shell size	Positions	A	B	C	E	F
E	09	30.81	24.99	16.92	11.08	19.20
A	15	39.20	33.30	25.25	19.39	27.70
B	25	53.04	47.04	38.96	33.24	41.10
C	37	69.40	63.50	55.42	49.86	57.30



50 Positions

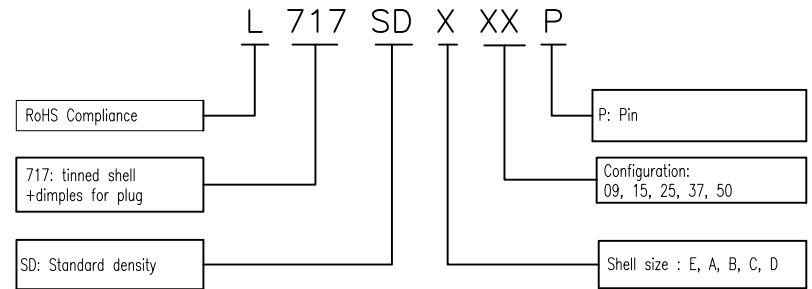


REVISIONS				
SYM	ECN	DESCRIPTION	DATE	APPROVED
1	HK--	First Release Drawing	03/20/08	IP
2	HK--	Update the drawing	12/26/11	IP
3	HK--	Update the drawing	04/11/12	IP
4	HK--	Update the drawing	06/20/14	IP
5	HK--	Update the drawing	04/24/18	IP

D-SUB TECHNICAL DATA

SHELL : SPCC, 100u" Tin over 50u" min nickel over 50u" min Copper
 BODY : PBT, UL 94V-0, Color:Black.
 CONTACTS : Copper Alloy.
 Gold flash over 50u" min nickel on mating area.
 100u" min tin over 50u" min nickel on solder area
 ELECTRICAL : Voltage rating: 250 VAC(RMS) Max
 Current rating: 3A
 Withstanding Voltage >1000 VAC(RMS)
 Insulation resistance >1000 M Ohms
 Contact resistance 25 mOhms max.
 MARKING : Amphenol...(Series No.)
 Commercial reference
 Manufacturing date

PRODUCT CODE



UNLESS OTHERWISE SPECIFIED TOLERANCES	APPROVAL		DATE
	U.S.	METRIC	
.X +/-	0.50	DRAWN	04/24/18
.XX +/-	0.30	CHECKED	04/24/18
.XXX +/-	0.20	CHECKED	
FRACTIONS +/-	5'	DRAWING FILE :	
ANGLES +/-		ANGLE OF PROJECTION	
FOR MATERIALS AND FINISHES SEE NOTES			
REMOVE SHARP EDGES			
DIMENSIONS		SCALE	
U.S.	INCHES	NONE	
METRIC	MM	SHEET 1 OF 1	

Amphenol		
TITLE		
Stamped and formed contact,SD series		
SIZE	DRAWING NO.	REV.
A4	L717SDXXXXP	5