

产品规格书 SPECIFICATIONS

订购信息/产品编号 Ordering information/ Product numbers

DH-20 waterproof connectors 防水连接器

规格 Specifications

适用于数据信号
Is applicable to data-signal

连接方式: 快速拔插连接

防护等级: IP65/IP67

线径范围: ϕ 5.5mm- ϕ 7mm

额定电流A: 5A

接触件直径 数量: ϕ 1.0X9

工作电压(AC.V.rms): 400V

耐压(AC.V)1min: 1500V

接触电阻: $<5m\Omega$

绝缘电阻: $>500M\Omega$

耐久次数: ≥ 500 次

工作温度: -40° ~ 80°

接线方式: 焊接式

Connecting mode: Plug/unplug

Protection level: IP65/IP67

Line diameter scope: ϕ 5.5mm- ϕ 7mm

Current rating: 5A

Contact diameter/Number of contact: ϕ 1.0X9

Operating voltage (AC.V.rms): 400V

Withstand voltage (AC.V)1min: 1500V

Contact resistance: $<5m\Omega$

Insulation resistance: $>500M\Omega$

Durability: ≥ 500 mating/unmating cycle

Temperature rating: -40° ~ 80°

Assembly style: Solder



DH-20-C09PE-01-001
Male Plug
公头



DH-20-J09SX-01-001
Female Socket
母座



DH-20-J09PE-01-001
Female Plug
母头



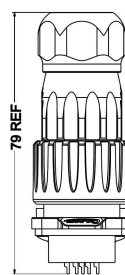
DH-20-C09SX-01-001
Male Socket
公座

材料 Material

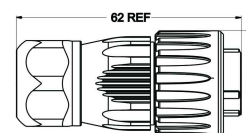
- | | |
|--|--|
| 1. 外壳、绝缘部件:
高性能工程塑料
五金: 锌合金 (珍珠硬铬) | 1. Shell&insulated parts:
High performance engineer plastic
Hardware metal: Zinc alloy (pearl hard chromium) |
| 2. 铜针: 铜合金(镀金层: 2") | 2. Contact: Copper alloy (gold plated layer: 2") |
| 3. 防水圈: 硅胶 | 3. Sealing: Silica gel |

外型尺寸图 Dimensions figure

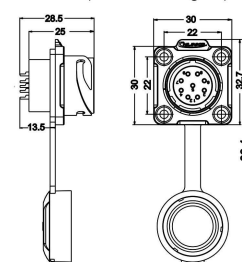
产品外型尺寸图
Dimensions figure



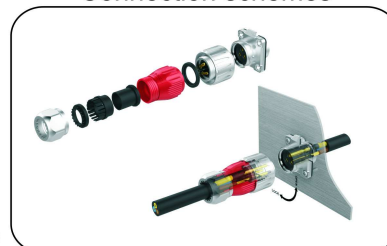
夹爪紧固式插头 PE(外型尺寸图)
PE clamping cable plug
(dimensions figure)



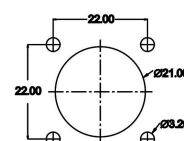
插座 S (外型尺寸图)
S socket (dimensions figure)



Connection schemes



安装开孔图
Installation hole figure



型号标志代号 Model code

DH-20-C09PE-01-001

