

# 产品规格书 SPECIFICATIONS

## 订购信息/产品编号 Ordering information/ Product numbers

### DH-20 waterproof connectors 防水连接器

#### 规格 Specifications

适用于电源  
Our products is applicable to electric power source

连接方式:快速拔插连接  
防护等级:IP65/IP67  
线材规格:1.0mm<sup>2</sup>-1.5mm<sup>2</sup>  
额定电流:12A  
温升:12A时温升在30℃以下,  
15A时温升在40℃以下,  
20A时温升在50℃以下  
接触件直径数量:φ1.8X5  
工作电压(AC.V.rms):500V  
耐压(AC.V)1min:2500V  
接触电阻:<2.5mΩ  
绝缘电阻:>500MΩ  
耐久次数:≥500次  
工作温度:-40°~80°  
接线方式:焊接式  
严禁带电拔插

Connecting mode:Plug/unplug  
Protection level:IP65/IP67  
Wire gauge:18~16AWG  
Current rating:12A  
temperature rise: 12A per contact at 30℃,  
15A per contact at 40℃,  
20A per contact at 50℃  
Contact diameter/Number of contact:φ1.8X5  
Operating voltage(AC.V.rms):500V  
Withstand voltage(AC.V)1min:2500V  
Contact resistance:<2.5mΩ  
Insulation resistance:>500mΩ  
Durability:≥500mating/unmating cycle  
Temperature rating: -40° ~ 80°  
Assembly style: Solder  
prohibited to charged inserted



DH-20-C05PE-01-001  
Male Plug  
公头



DH-20-J05SX-01-001  
Female Socket  
母座



DH-20-J05PE-01-001  
Female Plug  
母头



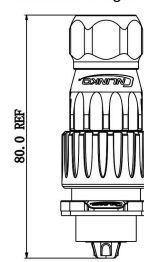
DH-20-C05SX-01-001  
Male Socket  
公座

#### 材料 Material

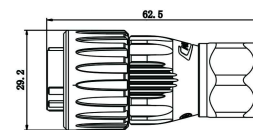
- 外壳、绝缘部件:  
高性能工程塑料  
五金: 锌合金(珍珠硬铬)
- 铜针: 铜合金(镀金层: 2")
- 防水圈: 硅胶
- Shell&insulated parts:  
High performance engineer plastic  
Hardware metal: Zinc alloy (pearl hard chromium)
- Contact: Copper alloy (gold plated layer: 2")
- Sealing: Silica gel

#### 外型尺寸图 Dimensions figure

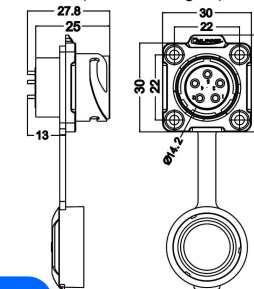
产品外型尺寸图  
Dimensions figure



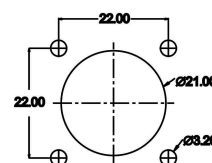
夹爪紧固式插头 PE(外型尺寸图)  
PE clamping cable plug  
(dimensions figure)



插座 S (外型尺寸图)  
S socket (dimensions figure)



安装开孔图  
Installation hole figure



#### 型号标志代号 Model code

### DH-20-C05PE-01-001

产品型号:A~Z (AA~ZZ)  
Product Type:A~Z (AA~ZZ)  
插座与面板配合直径  
接触件种类: 单件 C= 插针 J= 插孔  
Contact Type: CJ= Male Plug to female socket  
芯数: 02~XX 不定上限  
Core quantity : 02~XX

商业代码  
Commercial Code  
流水号  
Follow No.

外壳结构型式: G=带盖板 E=夹爪紧固式H=固定电缆式  
R=其它 X=座子 不代表任何意义, 补料号位数  
Shell struture form: G=with cover gasket E=clamping cable H=fixed cable R=others X=socket  
连接器种类: P=插头 S=插座  
Connector part: P=plug S=socket