

# 产品规格书 SPECIFICATIONS

## 订购信息/产品编号 Ordering information/ Product numbers

### DH-20 waterproof connectors 防水连接器

#### 规格 Specifications

适用于电源  
Our products is applicable to electric power source

连接方式: 快速拔插连接

防护等级: IP65/IP67

线材规格: 2.5mm<sup>2</sup>~4mm<sup>2</sup>

额定电流A: 20A

温升: 20A时温升在30℃以下,

25A时温升在40℃以下,

30A时温升在50℃以下

接触件直径/数量: φ2.7X3

工作电压(AC.V.rms): 500V

耐压(AC.V)1min: 2500V

接触电阻: <1mΩ

绝缘电阻: >500MΩ

耐久次数: ≥500次

工作温度: -40° ~80°

接线方式: 焊接式

严禁带电拔插

Connecting mode: Plug/unplug

Protection level: IP65/IP67

Wire gauge: 14~12 AWG

Current rating: 20A

temperature rise: 20A per contact at 30℃,

25A per contact at 40℃,

30A per contact at 50℃

Contact diameter/Number of contact: φ2.7X3

Operating voltage (AC.V.rms): 500V

Withstand voltage (AC.V)1min: 2500V

Contact resistance: <1mΩ

Insulation resistance: >500MΩ

Durability: ≥500 mating/unmating cycle

Temperature rating: -40° ~ 80°

Assembly style: Solder

prohibited to charged inserted



DH-20-C03PE-01-001  
Male Plug  
公头



DH-20-J03SX-01-001  
Female Socket  
母座



DH-20-J03PE-01-001  
Female Plug  
母头



DH-20-C03SX-01-001  
Male Socket  
公座

#### 材料 Material

1. 外壳、绝缘部件:

高性能工程塑料

五金: 锌合金 (珍珠硬铬)

2. 铜针: 铜合金(镀金层: 4")

3. 防水圈: 硅胶

1. Shell&insulated parts:

High performance engineer plastic

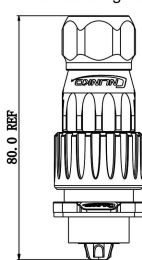
Hardware metal: Zinc alloy (pearl hard chromium)

2. Contact: Copper alloy (gold plated layer: 4")

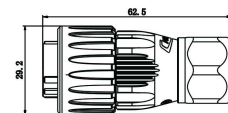
3. Sealing: Silica gel

#### 外型尺寸图 Dimensions figure

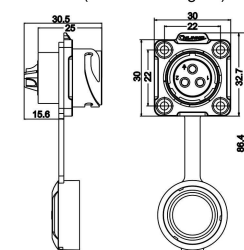
产品外型尺寸图  
Dimensions figure



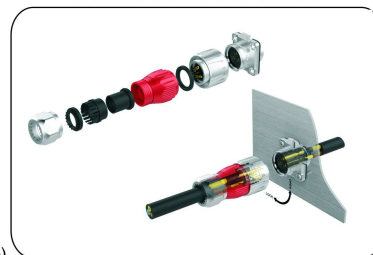
夹爪紧固式插头 PE(外型尺寸图)  
PE clamping cable plug  
(dimensions figure)



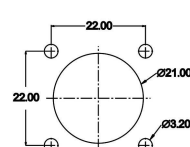
插座 S (外型尺寸图)  
S socket (dimensions figure)



#### Connection schemes



安装开孔图  
Installation hole figure



#### 型号标志代号 Model code

### DH-20-C03PE-01-001

产品型号:A~Z (AA~ZZ)  
Product Type:A~Z (AA~ZZ)

插座与面板配合直径  
Diameter of Socket and cover board matched

接插件种类: 单件 C= 插针 J= 插孔  
Contact Type: CJ= Male Plug to female socket

芯数: 02~XX 不上限  
Core quantity : 02~XX

商业代码  
Commercial Code

流水号  
Follow No.

外壳结构型式: G=带盖板 E=夹爪紧固式H=固定电缆式  
R=其它 X=座子 不代表任何意义, 补料号位数

Shell struture form: G=with cover gasket E=clamping cable H=fixed cable R=others X=socket

连接器种类: P=插头 S=插座  
Connector part: P=plug S=socket