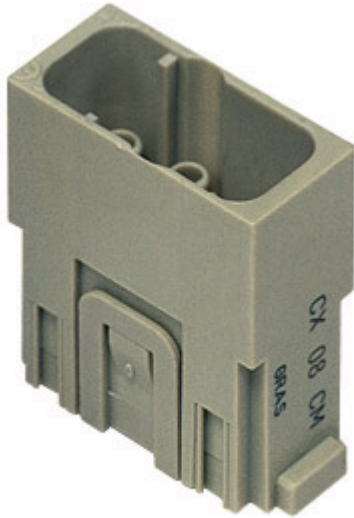


Part number  
**CX 08 CM**



**Brief description:**

male insert, 8 poles, crimp connections, 16A, 400V, 6kV, 3, 1 module, modular units series MIXO

**Product description**

<b>Model</b>	male insert
<b>Version</b>	Crimp connection
<b>Product type</b>	for male contacts 16A
<b>Family</b>	MIXO series, customizable inserts
<b>Size</b>	1 module
<b>N. of poles</b>	8 poles

**Technical data**

<b>Current</b>	16 A (A.C. and D.C.)
<b>Voltage</b>	400 V
<b>Rated impulse withstand voltage</b>	6kV
<b>Pollution degree</b>	3
<b>Operating temperature range (min, max)</b>	-40°C ... +125°C
<b>IP degree of protection</b>	IP20 without enclosure; IP65/IP66/IP67/IP68 with enclosure

**Further technical details**

<b>Characteristics according to EN 61984</b>	16A 400V 6kV 3; 16A 400/690V 6kV 2
<b>Insulation resistance</b>	≥ 10 GΩ
<b>Rated voltage according to UL/CSA</b>	600V
<b>UL 94 flammability rating</b>	V-0
<b>Weight</b>	8,00 g

**Approvals / Standards**

<b>Reference standard</b>	EN 61984:2009-06
<b>Quality mark</b>	 , EAC
<b>Conformity</b>	CQC, CE

**General ordering information**

<b>EAN13 code</b>	8015747129220
<b>Tariff number</b>	85369095

**Packaging Information**

<b>Packaging length</b>	180,00 mm
<b>Packaging height</b>	130,00 mm
<b>Packaging width</b>	150,00 mm
<b>Packaging weight</b>	0,74 kg
<b>Packaging volume</b>	3,51 dm <sup>3</sup>
<b>Packaging description</b>	Carton box
<b>Packaging quantity</b>	60 Pcs
<b>Packaging EAN code</b>	8015747221306
<b>Sub-packaging length</b>	35,00 mm
<b>Sub-packaging height</b>	40,00 mm
<b>Sub-packaging width</b>	155,00 mm
<b>Sub-packaging weight</b>	0,12 kg
<b>Sub-packaging volume</b>	0,22 dm <sup>3</sup>
<b>Sub-packaging description</b>	Carton
<b>Sub-packaging quantity</b>	10 Pcs
<b>Sub-packaging EAN barcode</b>	8015747129251

Part number

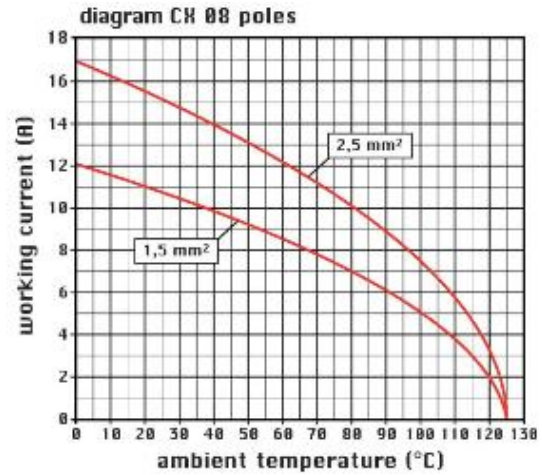
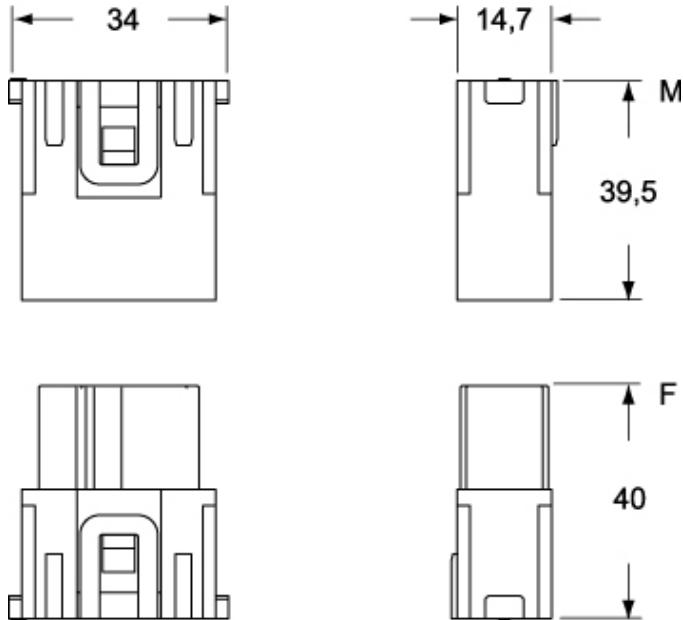
# CX 08 CM



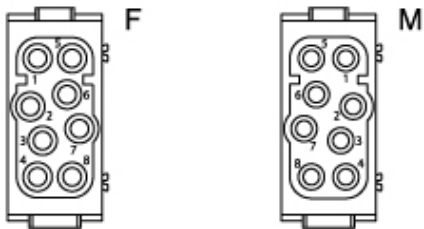
Catalogue drawings

Catalogue drawings

## CX 08 CM



## CX 08 CF



## Notes

CX 08 C inserts:

- characteristics according to EN 61984:  
(16A 400V 6kV 3)  
(16A 400/690V 6kV 2)
- footprint 1 modules
- for maximum current load, see the insert load curve section
- for contact crimping instructions, please see the crimping tool section (16A contacts, CCF, CCM and CC...AN series)

the modular inserts must be installed in suitable frames which in turn are installed in traditional housings or COB panel support