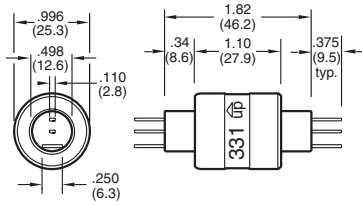


## 3 & 4 CONDUCTORS

### 3 Conductors, Combination 4 Amp & 30 Amp

### Model 331

MODEL NO.	CONDUCTORS	DESCRIPTION	VOLTAGE AC/DC	AMP RATING AT 240 VAC	MAX FREQ. MHz	CONTACT RESISTANCE	MAX OP. RPM	TEMPERATURE Max. F (C) / Min.F (C)	ROTATION Torque (gm-cm)	CIRCUIT SEPARATION
331	3	Standard Model	0-250	2 @ 4/1 @ 30	100	<1m?	1800	140(60)/-20(-29)	200	>25M?
331-SS	3	Stainless Steel Bearing	0-250	2 @ 4/1 @ 30	100	<1m?	1800	140(60)/-20(-29)	200	>25M?



Inch (mm)

#### Accessories



**55251** Terminal  
16-14 AWG (qty. 1 included)



**57230** Boot Kit  
For dust and splash protection IP51



**55250** Terminal  
16-14 AWG (qty. 1 included)



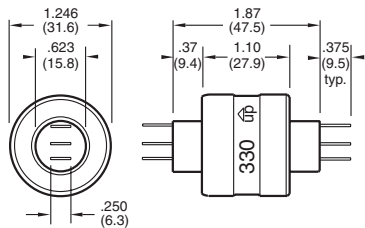
**55110** Terminal  
22-18 AWG (qty. 4 included)

Terminals for other wire gauges available.

### 3 Conductors, 30 Amp

### Model 330

MODEL NO.	CONDUCTORS	DESCRIPTION	VOLTAGE AC/DC	AMP RATING AT 240 VAC	MAX FREQ. MHz	CONTACT RESISTANCE	MAX OP. RPM	TEMPERATURE Max. F (C) / Min.F (C)	ROTATION Torque (gm-cm)	CIRCUIT SEPARATION
330	3	Standard Model	0-250	30	100	<1m?	1200	140(60)/-20(-29)	300	>25M?
330-SS	3	Stainless Steel Bearing	0-250	30	100	<1m?	1200	140(60)/-20(-29)	300	>25M?



Inch (mm)

#### Accessories



**55251** Terminal  
16-14 AWG (qty. 3 included)



**57430** Boot Kit  
For dust and splash protection IP51



**55253** Shrink Tube (qty. 3 included)



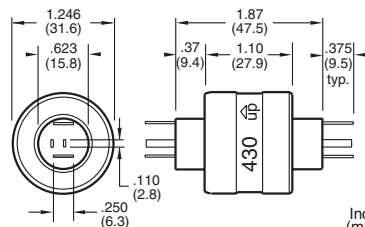
**55252** Terminal  
16-14 AWG (qty. 3 included)

Terminals for other wire gauges available.

### 4 Conductors, Combination 4 Amp & 30 Amp

### Model 430

MODEL NO.	CONDUCTORS	DESCRIPTION	VOLTAGE AC/DC	AMP RATING AT 240 VAC	MAX FREQ. MHz	CONTACT RESISTANCE	MAX OP. RPM	TEMPERATURE Max. F (C) / Min.F (C)	ROTATION Torque (gm-cm)	CIRCUIT SEPARATION
430	4	Standard Model	0-250	2 @ 4/2 @ 30	100	<1m?	1200	140(60)/-20(-29)	400	>25M?
430-SS	4	Stainless Steel Bearing	0-250	2 @ 4/2 @ 30	100	<1m?	1200	140(60)/-20(-29)	400	>25M?



Inch (mm)

#### Accessories

**50431** Plug Assembly  
12 in. wires, 14 AWG & 18 AWG  
Suitable for up to 20 Amps



**57430** Boot Kit  
For dust and splash protection IP51



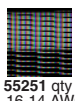
**50430** Plug Kit  
no wires, terminals for wire gauges 20-16 AWG & 16-14 AWG  
Suitable for up to 20 Amps  
Also order 5030-T



**55110** qty 4, 22-18 AWG



**55250** qty 2, 16-14 AWG



**55251** qty 2, 16-14 AWG



**5030-T** Plug Terminal Crimping Tool

To Order Call: 760-431-7723