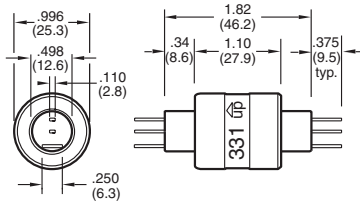


3 & 4 CONDUCTORS

3 Conductors, Combination 4 Amp & 30 Amp

Model 331

MODEL NO.	CONDUCTORS	DESCRIPTION	VOLTAGE AC/DC	AMP RATING AT 240 VAC	MAX FREQ. MHz	CONTACT RESISTANCE	MAX OP. RPM	TEMPERATURE Max. F (C) / Min.F (C)	ROTATION Torque (gm-cm)	CIRCUIT SEPARATION
331	3	Standard Model	0-250	2 @ 4/1 @ 30	100	<1m?	1800	140(60)/-20(-29)	200	>25M?
331-SS	3	Stainless Steel Bearing	0-250	2 @ 4/1 @ 30	100	<1m?	1800	140(60)/-20(-29)	200	>25M?

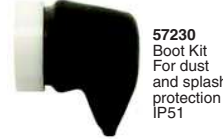


Inch (mm)

Accessories



55251 Terminal
16-14 AWG (qty. 1 included)



57230 Boot Kit
For dust and splash protection IP51



55250 Terminal
16-14 AWG (qty. 1 included)



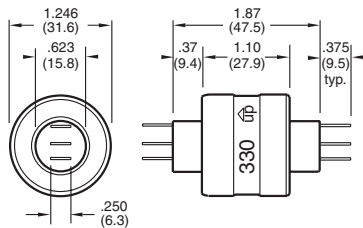
55110 Terminal
22-18 AWG (qty. 4 included)

Terminals for other wire gauges available.

3 Conductors, 30 Amp

Model 330

MODEL NO.	CONDUCTORS	DESCRIPTION	VOLTAGE AC/DC	AMP RATING AT 240 VAC	MAX FREQ. MHz	CONTACT RESISTANCE	MAX OP. RPM	TEMPERATURE Max. F (C) / Min.F (C)	ROTATION Torque (gm-cm)	CIRCUIT SEPARATION
330	3	Standard Model	0-250	30	100	<1m?	1200	140(60)/-20(-29)	300	>25M?
330-SS	3	Stainless Steel Bearing	0-250	30	100	<1m?	1200	140(60)/-20(-29)	300	>25M?



Inch (mm)

Accessories



55251 Terminal
16-14 AWG (qty. 3 included)



57430 Boot Kit
For dust and splash protection IP51



55253 Shrink Tube
(qty. 3 included)



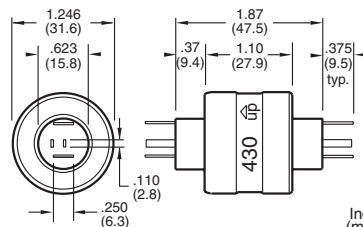
55252 Terminal
16-14 AWG (qty. 3 included)

Terminals for other wire gauges available.

4 Conductors, Combination 4 Amp & 30 Amp

Model 430

MODEL NO.	CONDUCTORS	DESCRIPTION	VOLTAGE AC/DC	AMP RATING AT 240 VAC	MAX FREQ. MHz	CONTACT RESISTANCE	MAX OP. RPM	TEMPERATURE Max. F (C) / Min.F (C)	ROTATION Torque (gm-cm)	CIRCUIT SEPARATION
430	4	Standard Model	0-250	2 @ 4/2 @ 30	100	<1m?	1200	140(60)/-20(-29)	400	>25M?
430-SS	4	Stainless Steel Bearing	0-250	2 @ 4/2 @ 30	100	<1m?	1200	140(60)/-20(-29)	400	>25M?



Inch (mm)

Accessories

50431 Plug Assembly
12 in. wires, 14 AWG & 18 AWG
Suitable for up to 20 Amps



57430 Boot Kit
For dust and splash protection IP51



50430 Plug Kit
no wires, terminals for wire gauges
20-16 AWG & 16-14 AWG
*Suitable for up to 20 Amps
Also order 5030-T*

55110 qty 4, 22-18 AWG

55250 qty 2, 16-14 AWG



55251 qty 2,
16-14 AWG



5030-T Plug Terminal Crimping Tool

To Order Call: **760-431-7723**