



| inserts: | | page |
|----------|--------------|------|
| CK | 3 poles + ⊕ | 36 |
| CK | 4 poles + ⊕ | 36 |
| CKS | 3 poles + ⊕ | 37 |
| CKS | 4 poles + ⊕ | 37 |
| CD | 8 poles | 40 |
| CQ | 5 poles + ⊕ | 63 |
| CQ | 12 poles + ⊕ | 62 |

overall dimensions:
21 x 21 mm

bulkhead housings

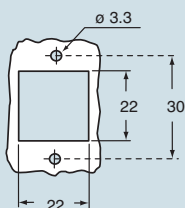


angled bulkhead housings



| description | part No. | part No. (entry - Pg 11) | part No. (entry - M 20) |
|--|-------------------------------------|--|--|
| with lever in galvanised steel ¹⁾ with stainless steel lever ¹⁾ | CKA 03 I CKAX 03 I | | |
| without cable gland outlet, lever in galvanised steel ¹⁾ without cable gland outlet, stainless steel lever ¹⁾ | | CKA 03 IA CKAX 03 IA | |
| with threaded entry, lever in galvanised steel ¹⁾ with threaded entry, stainless steel lever ¹⁾ with threaded entry, lever in galvanised steel ¹⁾ , bottom closed with threaded entry, stainless steel lever ¹⁾ , bottom closed | | CKA 03 IAPS CKAX 03 IAPS CKA 03 APS CKAX 03 APS | MKA IAP20 MKAX IAP20 MKA AP20 MKAX AP20 |
| seal and screw kit for IP66/IP67 ²⁾ for CK, CQ 05, CKS inserts | CKR 65 | CKR 65 | |
| seal and screw kit for IP66/IP67 ²⁾ for CD 07/08 inserts | CKR 65 D | CKR 65 D | |

panel cut-out for enclosures, in mm

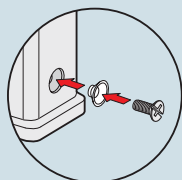


1) enclosures with IP44 degree of protection.

2) To achieve the IP66/IP67 protection rating, a kit is available which includes a seal to be fitted under the insert fastening screw supplied with the kit (see example illustrated), instead of the screw with spring washer supplied with the insert

Note:

The CQ 12 inserts are already fitted with seal and screw, allowing IP66/IP67 protection rating to be achieved.

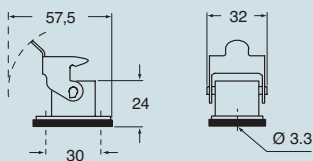


ILME® Type 12
Type 4/4X only
with CKR 65 (D)

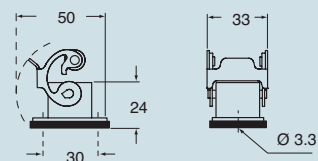
dimensions indicated are not binding
and may be changed without notice

dimensions in mm

CKA I

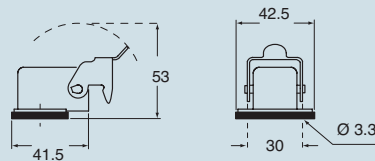


CKAX I

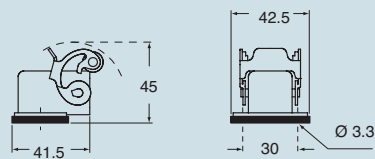


dimensions in mm

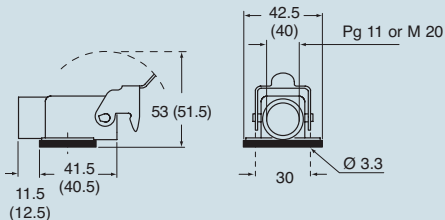
CKA IA



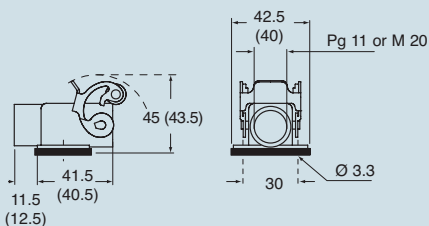
CKAX IA



CKA IAPS (CKA APS) and MKA IAP (MKA AP)



CKAX IAPS (CKAX APS) and MKAX IAP (MKAX AP)



size 21.21