

REV	DATE	DESCRIPTION	BY	CHKD	APP'D
1	150299	R 1001 -			
2	270400	R 1002 -			
3	070600	R 1003 -			
4	100604	R 1004 -			
5	210604	R 1005 -			
6	090605	R 1006 -			
7	010606	R 1007 -			
8	020606	R 1008 -			
9	030606	R 1009 -			
10	030606	R 1010 -			
11	080607	R 1011 -			

SYMBOL	SYMBOL DEFINITION	TOTAL NO. OF INSPECTIONS REQUIRED	LAST USED
5	A DIMENSION WITHOUT AN INSPECTION REPORT SYMBOL DOES NOT REQUIRE INSPECTION. IT MAY BE CONTROLLED ON THE INDIVIDUAL COMPONENT DRAWING.	5	
7		7	

DATE	DESCRIPTION	BY	CHKD	APP'D
150299	R 1001 -			
270400	R 1002 -			
070600	R 1003 -			
100604	R 1004 -			
210604	R 1005 -			
090605	R 1006 -			
010606	R 1007 -			
020606	R 1008 -			
030606	R 1009 -			
030606	R 1010 -			
080607	R 1011 -			

DATE	DESCRIPTION	BY	CHKD	APP'D
150299	R 1001 -			
270400	R 1002 -			
070600	R 1003 -			
100604	R 1004 -			
210604	R 1005 -			
090605	R 1006 -			
010606	R 1007 -			
020606	R 1008 -			
030606	R 1009 -			
030606	R 1010 -			
080607	R 1011 -			

DATE	DESCRIPTION	BY	CHKD	APP'D
150299	R 1001 -			
270400	R 1002 -			
070600	R 1003 -			
100604	R 1004 -			
210604	R 1005 -			
090605	R 1006 -			
010606	R 1007 -			
020606	R 1008 -			
030606	R 1009 -			
030606	R 1010 -			
080607	R 1011 -			

DATE	DESCRIPTION	BY	CHKD	APP'D
150299	R 1001 -			
270400	R 1002 -			
070600	R 1003 -			
100604	R 1004 -			
210604	R 1005 -			
090605	R 1006 -			
010606	R 1007 -			
020606	R 1008 -			
030606	R 1009 -			
030606	R 1010 -			
080607	R 1011 -			

DATE	DESCRIPTION	BY	CHKD	APP'D
150299	R 1001 -			
270400	R 1002 -			
070600	R 1003 -			
100604	R 1004 -			
210604	R 1005 -			
090605	R 1006 -			
010606	R 1007 -			
020606	R 1008 -			
030606	R 1009 -			
030606	R 1010 -			
080607	R 1011 -			

DATE	DESCRIPTION	BY	CHKD	APP'D
150299	R 1001 -			
270400	R 1002 -			
070600	R 1003 -			
100604	R 1004 -			
210604	R 1005 -			
090605	R 1006 -			
010606	R 1007 -			
020606	R 1008 -			
030606	R 1009 -			
030606	R 1010 -			
080607	R 1011 -			

DATE	DESCRIPTION	BY	CHKD	APP'D
150299	R 1001 -			
270400	R 1002 -			
070600	R 1003 -			
100604	R 1004 -			
210604	R 1005 -			
090605	R 1006 -			
010606	R 1007 -			
020606	R 1008 -			
030606	R 1009 -			
030606	R 1010 -			
080607	R 1011 -			

DATE	DESCRIPTION	BY	CHKD	APP'D
150299	R 1001 -			
270400	R 1002 -			
070600	R 1003 -			
100604	R 1004 -			
210604	R 1005 -			
090605	R 1006 -			
010606	R 1007 -			
020606	R 1008 -			
030606	R 1009 -			
030606	R 1010 -			
080607	R 1011 -			

DATE	DESCRIPTION	BY	CHKD	APP'D
150299	R 1001 -			
270400	R 1002 -			
070600	R 1003 -			
100604	R 1004 -			
210604	R 1005 -			
090605	R 1006 -			
010606	R 1007 -			
020606	R 1008 -			
030606	R 1009 -			
030606	R 1010 -			
080607	R 1011 -			

DATE	DESCRIPTION	BY	CHKD	APP'D
150299	R 1001 -			
270400	R 1002 -			
070600	R 1003 -			
100604	R 1004 -			
210604	R 1005 -			
090605	R 1006 -			
010606	R 1007 -			
020606	R 1008 -			
030606	R 1009 -			
030606	R 1010 -			
080607	R 1011 -			

DATE	DESCRIPTION	BY	CHKD	APP'D
150299	R 1001 -			
270400	R 1002 -			
070600	R 1003 -			
100604	R 1004 -			
210604	R 1005 -			
090605	R 1006 -			
010606	R 1007 -			
020606	R 1008 -			
030606	R 1009 -			
030606	R 1010 -			
080607	R 1011 -			

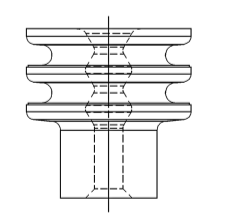
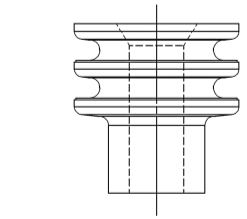
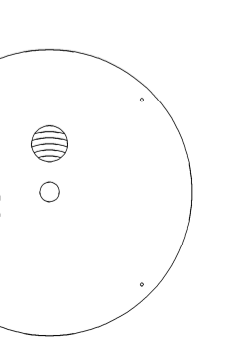
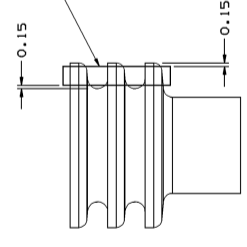
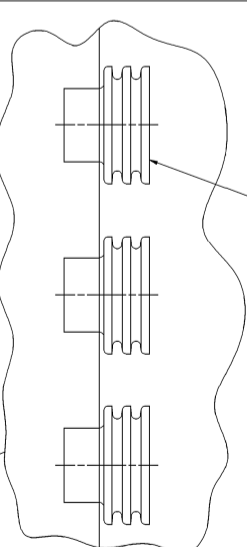
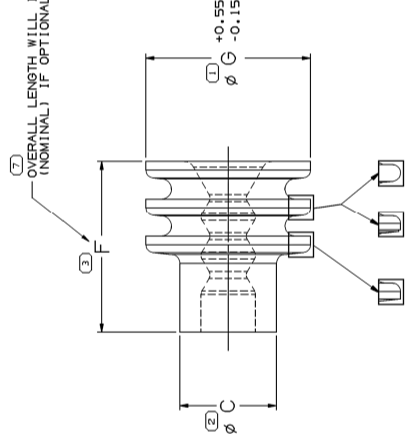
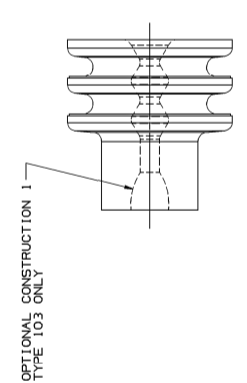
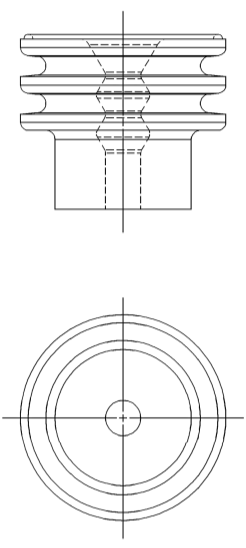
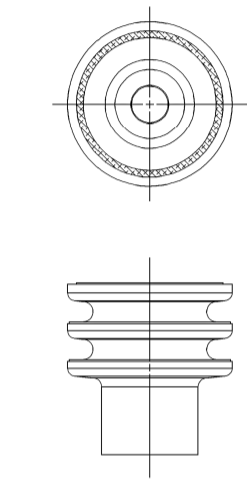
DATE	DESCRIPTION	BY	CHKD	APP'D
150299	R 1001 -			
270400	R 1002 -			
070600	R 1003 -			
100604	R 1004 -			
210604	R 1005 -			
090605	R 1006 -			
010606	R 1007 -			
020606	R 1008 -			
030606	R 1009 -			
030606	R 1010 -			
080607	R 1011 -			

DATE	DESCRIPTION	BY	CHKD	APP'D
150299	R 1001 -			
270400	R 1002 -			
070600	R 1003 -			
100604	R 1004 -			
210604	R 1005 -			
090605	R 1006 -			
010606	R 1007 -			
020606	R 1008 -			
030606	R 1009 -			
030606	R 1010 -			
080607	R 1011 -			

DATE	DESCRIPTION	BY	CHKD	APP'D
150299	R 1001 -			
270400	R 1002 -			
070600	R 1003 -			
100604	R 1004 -			
210604	R 1005 -			
090605	R 1006 -			
010606	R 1007 -			
020606	R 1008 -			
030606	R 1009 -			
030606	R 1010 -			
080607	R 1011 -			

OPTIONAL CONSTRUCTION 2
(ANTI-STICK RINGS)

OPTIONAL CONSTRUCTION 3
THIS IS THE PREFERRED CONSTRUCTION FOR NEW
(ANTI-STICK RINGS)



SEAL/MYLAR ASSEMBLY DETAIL

NOTES

1. THE MYLAR TAPE IS ONLY A CARRIER USED AS A PROCESS AID AND IS NOT PART OF THE FINAL HARNESS ASSEMBLY.
2. WHEN PARTS ARE SHIPPED, THEY MUST BE PACKED IN PLASTICS BAGS OR SHIPPING CONTAINERS. THEY MUST BE LINED WITH PLASTIC LINERS. BAGS OR LINERS MUST BE SEALED TO AVOID ENTRY OF FOREIGN MATTER.

TYPE 102
SAME AS TYPE 101
EXCEPT FOR INTERNAL SEALING FEATURES

TYPE 103
SAME AS TYPE 101
EXCEPT FOR INTERNAL SEALING FEATURES

SEALING RIBS MUST BE FREE OF DEFECTS IN THE AREA SHOWN AND ALL AROUND PART. SEE VPS A-121 FOR ADDITIONAL INFORMATION

OVERALL LENGTH WILL INCREASE BY 0.2 MM (MINIMAL) IF OPTIONAL CONSTRUCTION 3 IS USED

SEALING RIBS MAY DIFFER AS SHOWN

PART NO	REV	N/P	STATUS	CABLE SEAL	TYPE	MATERIAL SPECIFICATION	COLOR (REF ONLY)	ALTERNATE MATERIAL SPECIFICATION	SEE NOTE 3	C	F	G	CAVITY I.D.	VOL	EQUIVALENT CABLE SEAL
15497757	01	AC	RESTRICTED	103	RESTRICTED	M2261009	GRN	M2261009	2.15-1.6	4.25	7.5	7.25	6.7	0.14	12089679
15497755	01	AC	RESTRICTED	102	RESTRICTED	M2261012	GRN	M2261012	3.49-2.81	4.25	7.5	7.25	6.7	0.142	12010293
15338470	01	AC	RESTRICTED	101	RESTRICTED	M2261001	GRN	M2261001	2.85-2.03	4.25	7.5	7.25	6.7	0.15	12015323
15361980	01	AA	RESTRICTED	103	RESTRICTED	M3466039	TAN	M3466039	2.15-1.6	4.25	7.5	7.25	6.7	0.144	12089679
15361981	01	AA	RESTRICTED	102	RESTRICTED	M3466038	TAN	M3466038	2.42-2.03	4.25	7.5	7.25	6.7	0.162	12041351
15361982	01	AA	RESTRICTED	101	RESTRICTED	M3466037	GRN	M3466037	1.77-1.29	4.25	7.5	7.25	6.7	0.171	12015899
15361983	01	AA	RESTRICTED	101	RESTRICTED	M3466036	GRN	M3466036	2.95-2.03	4.25	7.5	7.25	6.7	0.172	12013263
15361984	01	AA	RESTRICTED	101	RESTRICTED	M3466035	GRN	M3466035	3.49-2.81	4.25	7.5	7.25	6.7	0.142	12010293
12146012	01	AA	RESTRICTED	101	RESTRICTED	M4380005	GRN	M4380005	2.85-2.03	4.15	7.3	7.25	6.7	0.142	15324985
12089444	01	AA	RESTRICTED	103	RESTRICTED	M3471039	YEL	M3471039	2.15-1.6	4.25	7.5	7.25	6.7	0.142	15324985
12041352	01	AA	RESTRICTED	102	RESTRICTED	M2261029	TAN	M2261029	2.42-2.03	4.25	7.5	7.25	6.7	0.162	15324984
1															