

MOD II Shrouded Headers

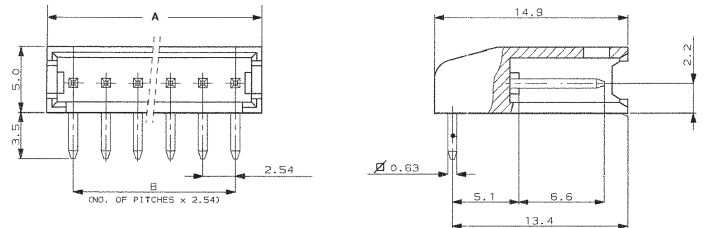
Right Angle, Single Row

Specification:

- Housing** - Black thermoplastic, UL 94V-0 rated
- Posts** - Brass (gold plating) or phosphor bronze (tin plating). Plating details as follows:
- Plating A** - Gold 0.8 µm on contact area and 2.5 µm tin on solder area, with entire post underplated 1.3 µm nickel
- Plating B** - Gold 0.4 µm on contact area and 2.5 µm tin on solder area, with entire post underplated 1.3 µm nickel
- Plating C** - Tin 3.5 µm

Mating Connectors:

- MOD II Receptacle Housings - Page 12
- MOD II PCB Receptacles - Page 14



Technical Documents:

Product Specification - 108-20025

No. of Positions	Dimension		Part Number		
	A	B	Plating A	Plating B	Plating C
2	7.7	2.54	280377-3	280377-2	280377-1
4	12.7	7.62	280378-3	280378-2	280378-1
6	17.8	12.70	280379-3	280379-2	280379-1
8	22.9	17.78	280380-3	280380-2	280380-1
9	25.4	20.32	-	-	280511-1
10	28.0	22.86	280381-3	280381-2	280381-1
12	33.1	27.94	280523-3	280523-2	280523-1
15	40.7	35.56	-	280382-2	280382-1
22	58.5	53.34	-	280383-2	280383-1

MOD II Shrouded Headers

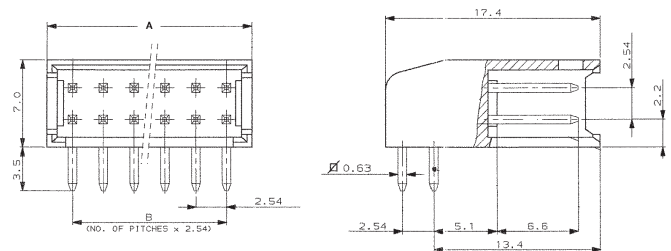
Right Angle, Double Row

Specification:

- Housing** - Black thermoplastic, UL 94V-0 rated
- Posts** - Brass (gold plating) or phosphor bronze (tin plating). Plating details as follows:
- Plating A** - Gold 0.8 µm on contact area and 2.5 µm tin on solder area, with entire post underplated 1.3 µm nickel
- Plating B** - Gold 0.4 µm on contact area and 2.5 µm tin on solder area, with entire post underplated 1.3 µm nickel
- Plating C** - Tin 3.5 µm

Mating Connectors:

- MOD II Receptacle Housings - Page 12
- MOD II PCB Receptacles - Page 14



Technical Documents:

Product Specification - 108-20025

No. of Positions	Dimension		Part Number		
	A	B	Plating A	Plating B	Plating C
2x4	12.7	7.62	280389-3	280389-2	280389-1
2x5	15.2	10.16	-	284124-1	-
2x6	17.8	12.70	-	282790-1	-
2x8	22.9	17.78	280390-3	280390-2	280390-1
2x9	25.4	20.32	280510-3	280510-2	280510-1
2x12	33.1	27.94	280522-3	280522-2	280522-1
2x15	40.7	35.56	280392-3	280392-2	280392-1
2x18	48.3	43.18	-	281021-2	-
2x22	58.5	53.34	-	280393-2	280393-1