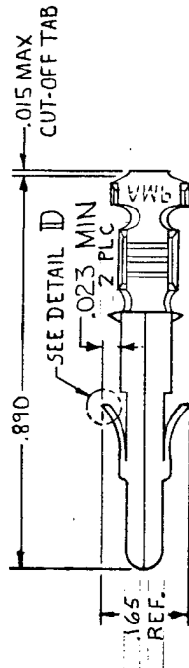
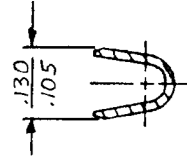
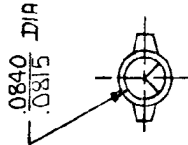
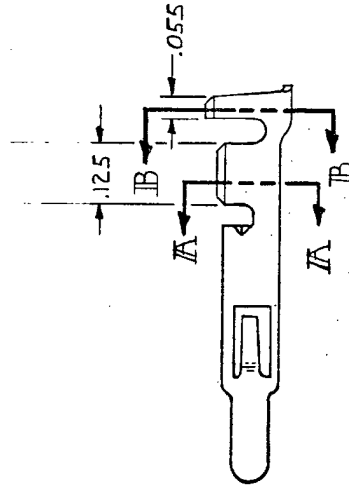


4 DRAWING MADE IN THIRD ANGLE PROJECTION

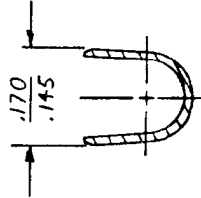
© COPYRIGHT 1975 BY AMP INCORPORATED, HARRISBURG, PA.
ALL INTERNATIONAL RIGHTS RESERVED. AMP INCORPORATED PRODUCTS
COVERED BY U. S. AND FOREIGN PATENTS AND/OR PATENTS PENDING.



DETAIL ID



SECTION A-A



SECTION B-B

⚠ INSULATION RANGE: .060-.130 DIA.

2

P	F	ZONE	LTR	DESCRIPTION	DATE	APPROVED
✓	✓	G		REVISED PER ECR-12-013323	10/AUG/12	TM

3

REVISIONS	
DESCRIPTION	DATE
REVISED PER ECR-12-013323	10/AUG/12

1 LOC CM DIST 53

UNLESS OTHERWISE SPECIFIED, DIMENSIONS ARE IN INCHES. TOLERANCES ON: DECIMALS ± .015 ANGLES ±		CONTRACT NO		PRE-TIN .012 BRASS 350669-1	
DIR MFEIER 5-6-81		FINISH MATERIAL		PART NO	
CHK S. S. Verde 6/9/81		NAME AMP AMP INCORPORATED Harrisburg, Pa.		DRAWING NO	
APPD P. P. Lakshmi 6-10-81		SIZE B		CODE IDENT NO 00779	
DSGN APPD		WIRE RANGE 20-14 AWG		DRAWING NO 350669	
OTHER APPD		INSULATION RANGE ⚠		SCALE 4-1	
				SHEET 4	